

2I610HW

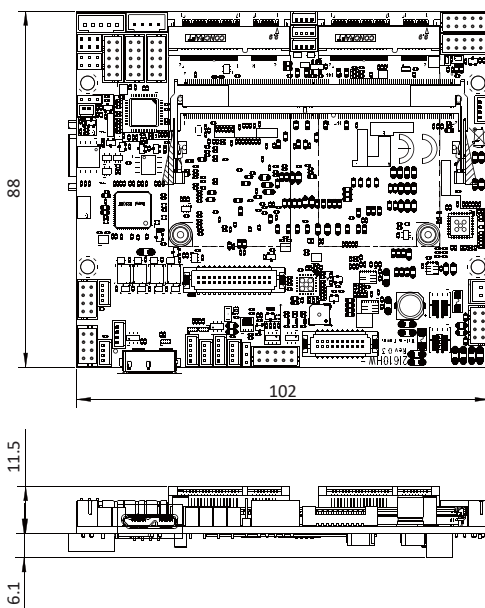
2.5" Plus SBC supports 6th / 7th Gen Intel® Skylake-U / Kaby Lake-U CPU
VGA, HDMI, LVDS, Touch Screen, 2 x Intel Gb Ethernet,
4DI / 4DO, 6 x USB, 2 x COM, 2 x Mini PCIe, SMBus



Features:

- 6th / 7th Gen Intel® Skylake-U / Kaby Lake-U, i7 / i5 / i3 / Celeron CPU
- 1 x DDR4 SODIMM socket, Max. 32GB
- Multiple Independent display: VGA , HDMI & LVDS
- 2 x Intel GbE LAN, 2 x USB 3.0, 4 x USB 2.0, 1 x Micro USB 3.0 (OEM)
- 2 x COM, 4DI / 4DO, Touch Screen, 2 x Mini PCIe, SMBus

Dimensions: (Unit:mm)



Specifications :

- CPU
6th / 7th Gen Intel® Skylake-U / Kaby Lake-U, i7 / i5 / i3 / Celeron CPU
- MB Chipset
Intel® Skylake-U / Kaby Lake-U SoC
- Graphics
Intel® HD Graphics, Support DirectX 12 & OpenGL 4.4 / 4.5
- System Memory
1 x DDR4 SODIMM socket, Max. 32GB
- Storage
1 x SATA ports 2.0 Data transfer rates up to 3.0 Gb/s (300 MB/s), Share with mSATA 1
1 x mini card socket for mSATA
- BIOS
Insyde UEFI BIOS
- Display
1 x VGA, 1 x HDMI, Dual Channel, 48 bits LVDS
- Touch
USB touch screen controller
- LAN
2 x Intel GbE (internal)
- Expansion Interface
1 x Full size Mini PCIe (PCIe / mSATA / USB)
1 x Full size Mini PCIe (PCIe / USB)

Expansion Module

Converter Card	CN066: Mini PCIe to M.2 E key 2230, WiFi 6 + BT
Mini Card	GPS, 3G / 4G, WI-FI, 2 / 4 x LAN, 4 x COM, CANBus, SDI / AHD Video
By Cable	Bluetooth, Digital I/O, 2 / 4 PoE, 4 x USB mini card

- USB
2 x USB 3.0 (internal) ; 4 x USB 2.0 (internal) ; 1 x Micro USB 3.0 (OEM)

USB Expansion

USB to	COM, Mini Card, M.2, Audio board
--------	----------------------------------

- Serial IO
2 x RS232 / 422 / 485 (internal)
*COM1, COM2 pin9 5V / 12V selectable by jumper
- GPIO
Hardware digital Input & Output, 4 x DI / 4 x DO
- SMBus
1 x SMBus
- WDT
Hardware Watch Dog Timer, 0~255 sec programmable
- Power Input
Wide Range +9~36V
- Dimension
2.5" Plus (102 x 88 mm)
- Operation Temperature (100 % CPU Usage)
-20°C~70°C (Core i7 6600U)
- Operation Humidity
5~95%, non-condensing
- Chassis (OEM I/O Expansion by request)
IP66 / I67 Waterproof PC / IP66 / IP67 Waterproof PPC
- OS Support

7th Generation Intel® Core™ Processor family: Kaby Lake

Windows® 10 IOT (64bit)
Ubuntu 16.04.3 above, Fedora 26 above, CentOS 7.4 above

6th Generation Intel® Core™ Processor family: Skylake

Windows® 10 IOT (64bit) / Windows® 8.1 (64bit)
Windows® Embedded 8 Standard (64bit) / Windows® 7 (64bit)
Windows® Embedded Sta 7 (64bit)
Ubuntu 16.04.3 above, Fedora 26 above, CentOS 7.4 above