

博來科技股份有限公司

LEX COMPUTECH CO.,LTD.

Lex SYSTEM[®]



www.lex.com.tw

LEX believes your success will be our success. 2024 v01



About LEX

Name LEX Computech CO.,LTD

Established May 15th,1990 **Stock Exchange** TPEX 7562

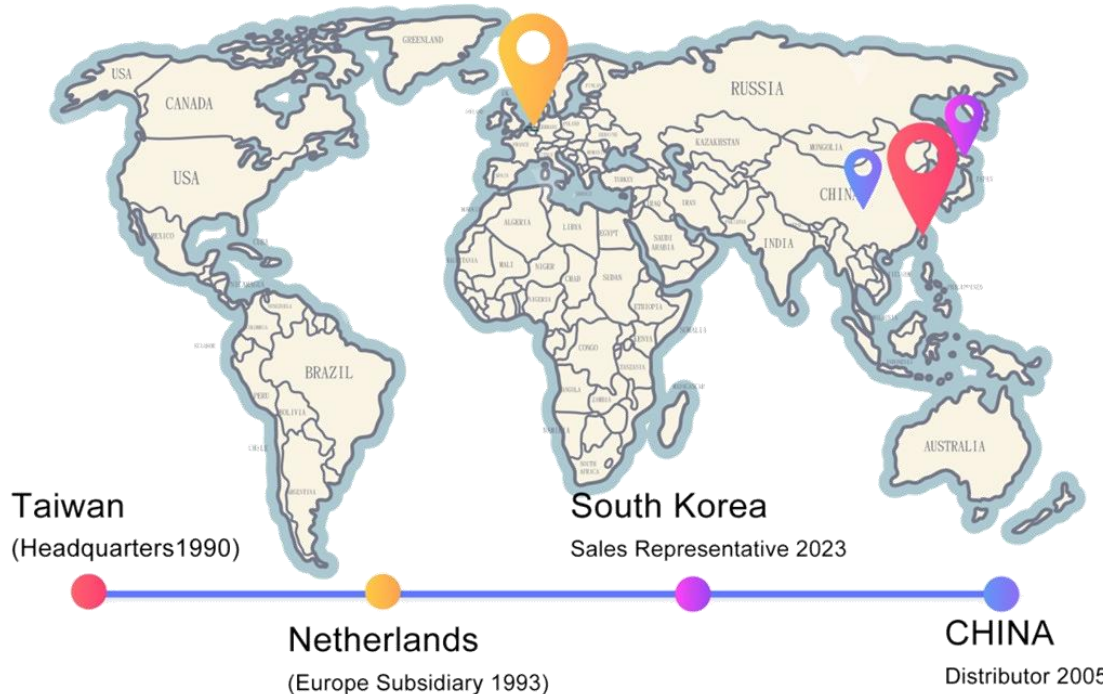
Capital NTD 200 million in 2018. **Business Items** Industrial Motherboards, Embedded Systems, AI Image Analysis, Smart Cities, Smart Manufacturing, Intelligent Healthcare, Fanless Rugged Panel PC, Smart Transportation ,Edge Computing and Expansion Module Products

Employees 101 (R&D / 32)

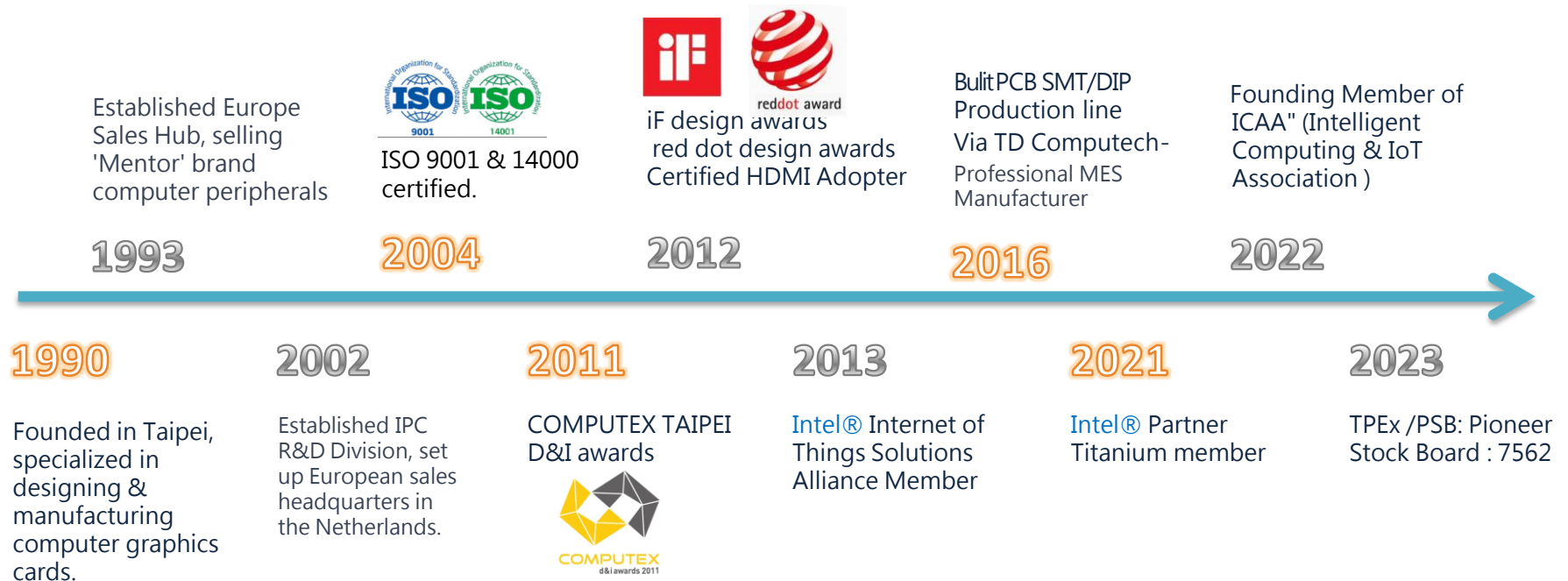
Worldwide Support Headquarters : Taiwan (101)
Subsidiary : Netherlands (11), TD Computech (100)
Sales Representatives : South Korea

Design and Manufacture in Taiwan

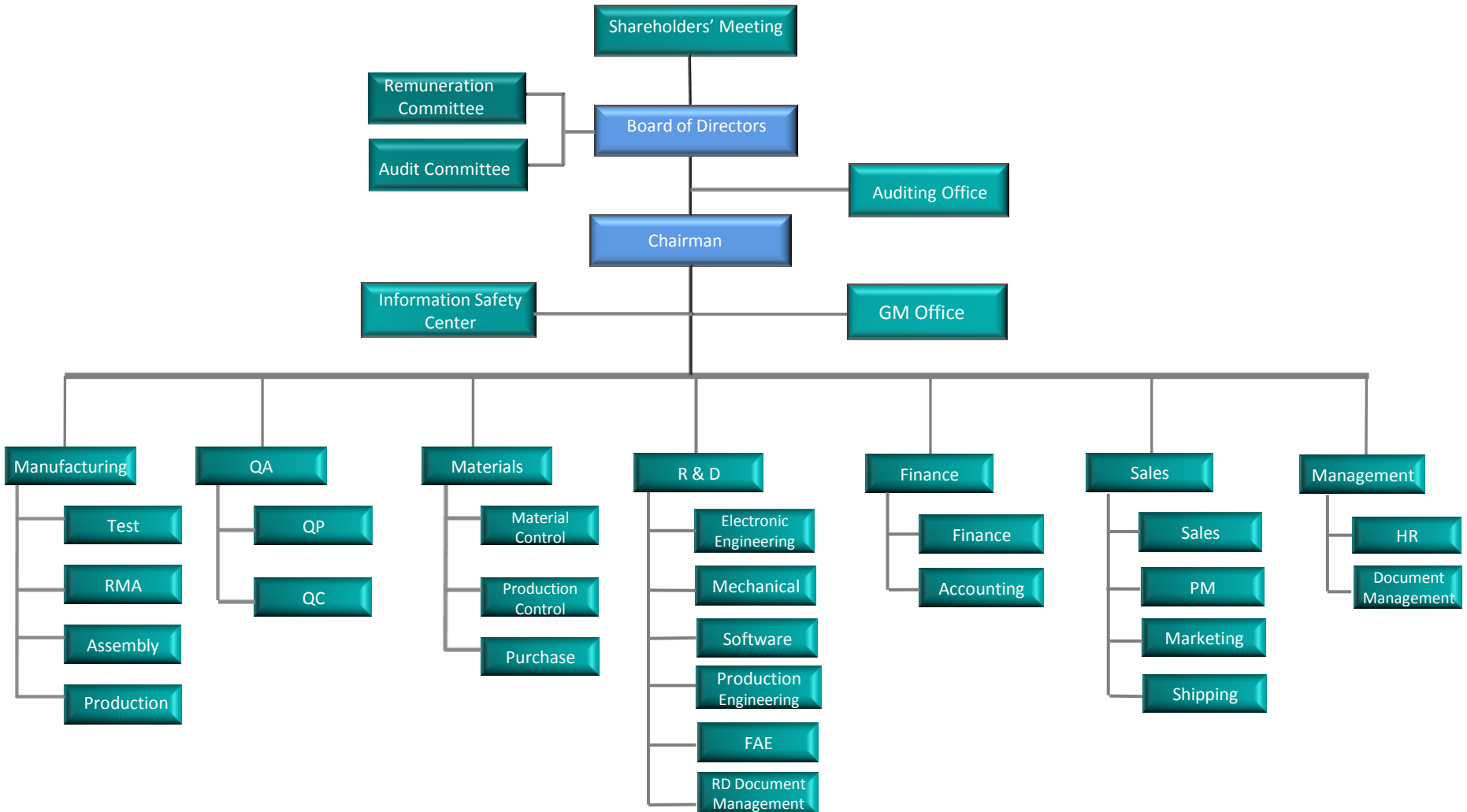
LEX Computech (TPEX:7562), founded in 1990, is a leading industrial computer Manufacturer. With a strong European presence for three decades and Asian business representatives, LEX offers embedded system solutions, including OEM/ODM services and custom products. As an Intel IoT Solutions Alliance member, LEX holds ISO 9001 certification, multiple patents, and complies with automotive and railway safety standards.



Company Milestones



Organization Chart



Striving for Excellence

Product Stability and Reliability

LEX SYSTEM holds complete ISO certification, dedicated to delivering high-quality products that meet international standards. With comprehensive quality management from design to production, we provide highly stable and durable products, ensuring exceptional customer satisfaction

Digital Oscilloscope



Programmable Aging Constant Temperature and Humidity Test Chamber



Waterproof and Airtight Testing Machine



Burn-in Chamber



Vibration Testing Machine



Certification:



MES - Manufacturing Execution System

Professional Motherboard Manufacturing Process

Implementing traceability of production materials and production process through MES could :

- Meet enterprise needs in product management, quality control, equipment integration, problem traceability analysis, and real-time data collection.
- Leverage MES advantages for precise task execution and providing real-time production data access to customers.

SMT

Surface Mount Technology

DIP

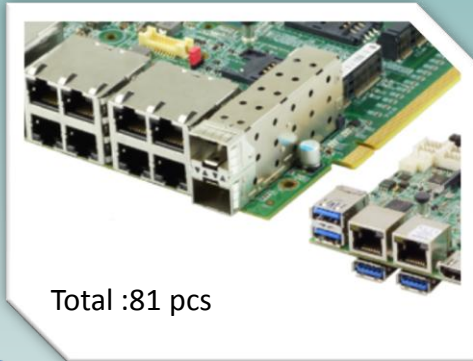
Dual In-line Package



ISO9001, ISO14001 Certificated

LEX SYSTEM – Embedded Solution

LEX offers design and manufacturing of industrial motherboards, industrial computers, expansion boards, and customized industrial computers, including edge computing systems and AI intelligent application platforms. Our in-house developed products cover four major categories:



Total :81 pcs

1 Embedded IPC Board

- Femto-ITX 1.8" : 3 pcs
- 3.5" SBC :30 pcs
- Computer On Module : 5 pcs
- UPS board : 4 pcs
- Pico-ITX 2.5" : 28 pcs
- 5 ¼" (200 x 150mm) : 4 pcs
- CPU board : 3 pcs
- ARM based : 4 pcs



2 Customized Motherboard & Chassis

Innovating Research & Integration Services for Global OEM/ODM and System Integrators

• Applications



AI / Visual Analytics



Smart Manufacturing /
Machine Vision



IoT / IIoT



Smart Transportation
& Railways



Maritime Shipping
& Navigation



Defense / Military
Robust Computers



Smart Healthcare/
AI Medical Imaging



Networking/
Communication Equipment



Edge Computing
Edge Gateway Control

LEX SYSTEM – Embedded Solution



3 Fanless Rugged Panel PC, Fanless Embedded Systems, Servers



4 Expansion Boards/Cards & Related Accessories

Fanless Rugged Panel PC



•SUPER series (7" /10.1" /10.4" /15")



•VITA series (10.1" /15" /21.5" /23.8")



•Slim series (8.4" /10.2" /15.1" /17")



•SHARK IP66/67 waterproof (10.1" /13.3")



•STAR IP66/67 waterproof (10.4" /12.1" /15.1")



•Stainless IP66/IP67/IP69K waterproof

(10.4" /15.1" /19")

Fanless Embedded System



•Rugged /Waterproof System

•In-vehicle System



•DIN Rail System

•1U server



•AI image Analysis & Machine Vision

•Ultra Compact / Compact System

•High-Speed Ethernet Network Card / PoE / Fiber Card

•4G / 5G / WiFi / Bluetooth Module

•Video Capture Car

•USB / SIM / COM / Display Conversion Card

•M.2 / eIO Expansion Card

•Storage Card

•Digital IO Card

•Carriers and Converter Boards

•Power Boards and Charger Modules

Features & Advantages

LEX SYSTEM's Flexibility in Customized Design and Manufacturing, Integrating Motherboards, Expansion Cards, and Complete System Solutions. Our Flexible Product Services cater to various custom solutions in Embedded Computing, Industry 4.0, Digital Monitoring, Mobile Medical Devices, Smart Manufacturing, Networking Applications, Machine Vision, IoT, Big Data, and Artificial Intelligence Platforms.



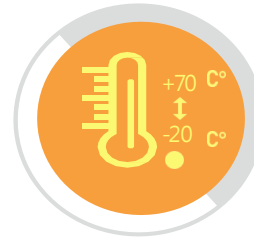
Flexible

Diverse Expansion interfaces and modules for various Vertical Applications



Integration

Accelerating Customer Development Speed for Cross-Platform products



Stable

Wide Temperature, Wide Voltage & Shock Resistance, IP66/IP67 & IP69K Waterproof Design



Innovation

Fanless small Form Factor Embedded tailored products or space-constrained solutions

Main Business Items and Key Customers:

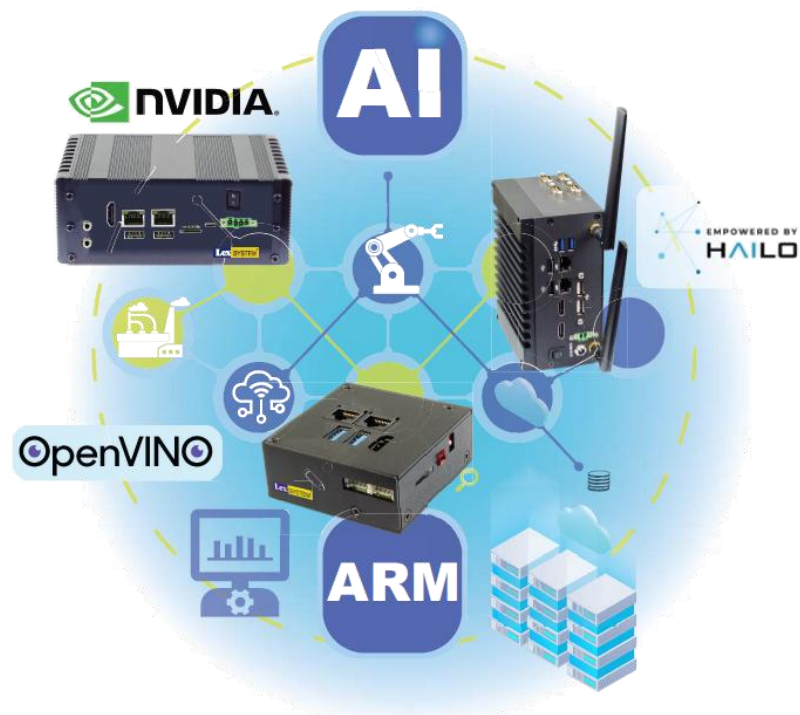
LEX manufactures and provides 100% Taiwan-designed industrial computer products. In addition to standard products, LEX specializes in OEM/ODM customized production and design services, tailoring exclusive products to meet customer demands.

Japanese Major Banking Server Equipment, Eastern Europe Government Projects including Military-Grade Laptops and Related Products. Collaboration with Taiwanese Image Capture Card Listed Company for International Sports Broadcasting and Intelligent Traffic Image Analysis Systems.

Future Development & Prospects

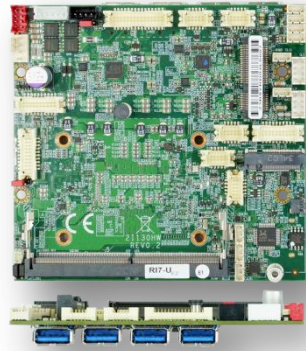
Lex SYSTEM - Your Trusted Partner for Cutting-edge Solutions in Automation, Image Analysis, Transportation, Military, Automotive, 5G, and Medical Industries. Experience Innovation and Success Across Sectors with our Market-driven Approach and Versatile Applications.

Applications



Highlights Product

13th Gen Intel Raptor Lake Core™ Solution



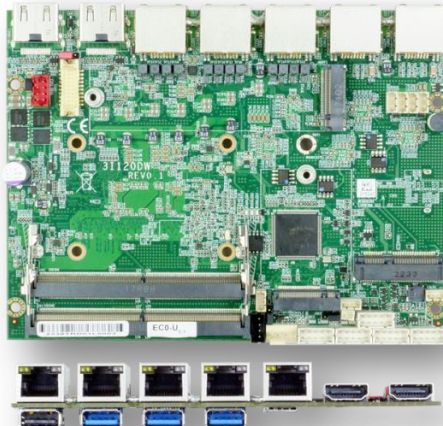
21130HW 2.5" wafer I/O SBC



21130DW 2.5" SBC



SKY 2 21130DW



31130DW 3.5" SBC



SKY 3 31130DW

High Performance Computing



TASK 31130DW

Edge AI Embedded System

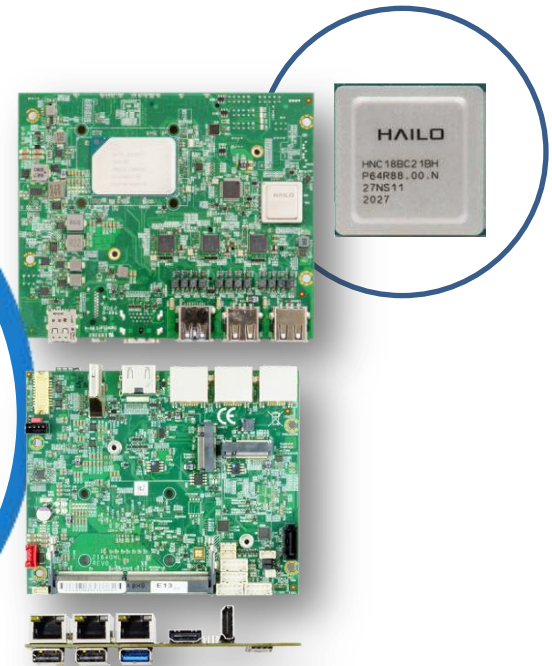
Smart Manufacturing

HAILO-AI AI Computing Chipset

SKY 2 2I640HL on board Hailo-8 Edge AI processor



- Machine Vision
- Smart City
- Smart Healthcare
- Smart Transportation
- Smart Retail
- Intelligent Manufacturing
- Automated Factories
- Industry 4.0
- Networking Applications
- Digital Monitoring
- Internet of Things (IoT)



Next-gen AI Embedded System



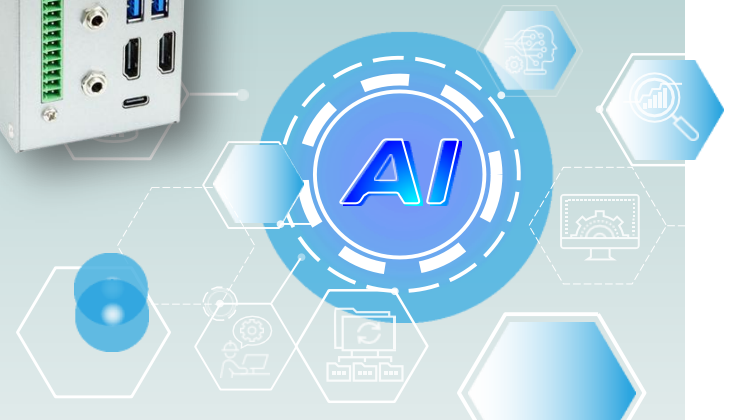
JETSON
Orin™ NX

JETSON
Orin™ Nano

Embedded Edge AI Computing



2NOR01



Contact Us

LEXCOM B.V.
(The Netherlands)

Tel:+31-73-6872390
Fax:+31-73-6872398
Email: info@lex.com.tw

LEX COMPUTECH CO.,LTD.
(Taiwan New Taipei City)

Tel:+886-2-2228-1055
Fax:+886-2-2228-1056
Email: lex.sales@lex.com.tw

South Korea

Tel: +82-10-9619-0127
Email: ds.choi@lex.com.tw

Xi'an CHINA
(Distributor)

Tel:+86-29-86239340
+86 13823511963 / +86 13379296808
Email: peter@lex.com.tw / robin@lex.com.tw

