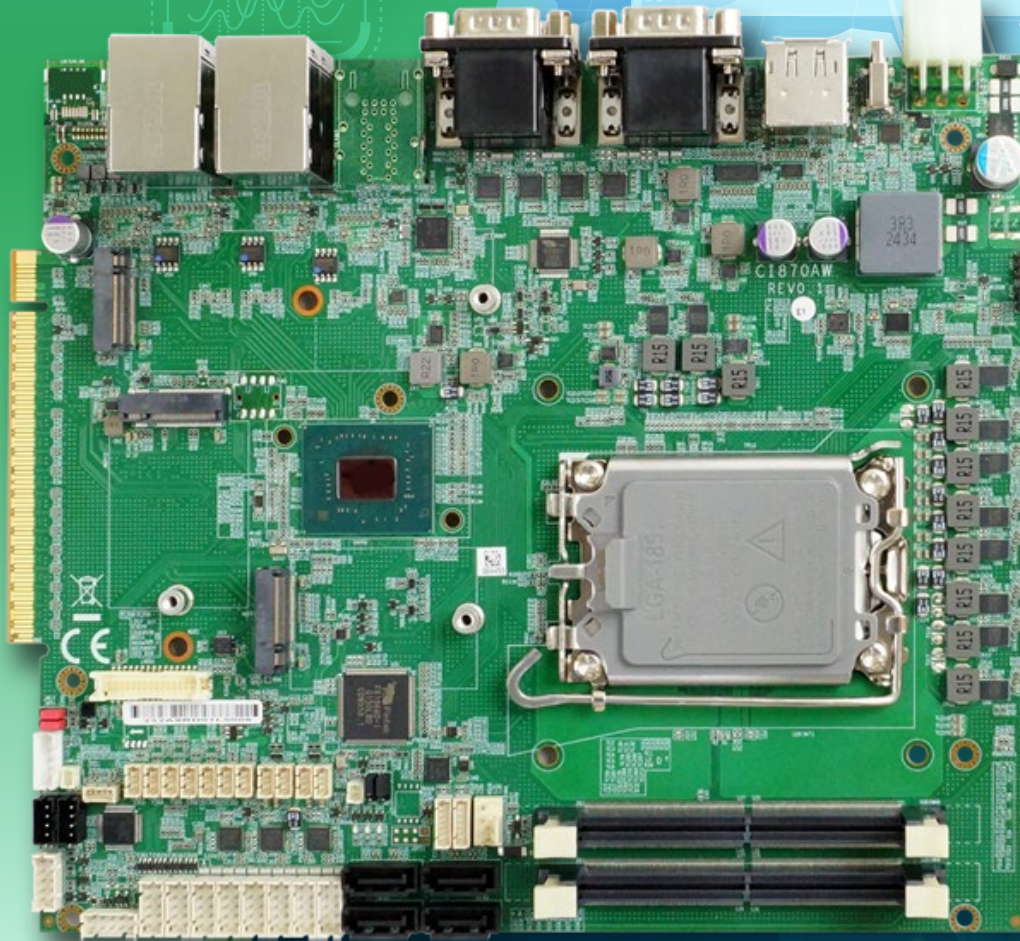


CI870AW

Maximizing performance SBC with Intel® Core™ Ultra
Series 2 (Arrow Lake-S) Processor





CI870AW

Maximizing performance SBC with Intel® Core™ Ultra Series 2 (Arrow Lake-S) Processor

The LEX SYSTEM CI870AW is a high-performance single board computer (186 x 217 mm) powered by Intel® Core™ Ultra Series 2 processors (Arrow Lake-S). It supports up to 96 GB of DDR5 memory via two SO-DIMM slots and offers versatile display outputs, including HDMI®, DisplayPort and USB Type-C with DP Alt Mode.

For connectivity, the CI870AW integrates two Intel® 2.5G LAN ports, four serial ports, USB 3.2, USB 2.0, and SATA III. Expansion is enabled through a PCIe golden finger, Nano SIM slot, and multiple M.2 interfaces (M-Key, 2 × B-Key) for storage, wireless modules, and 5G support.

With a wide range DC input, CI870AW is designed for demanding environments such as industrial automation, manufacturing, transportation, healthcare, and other edge AI deployments.

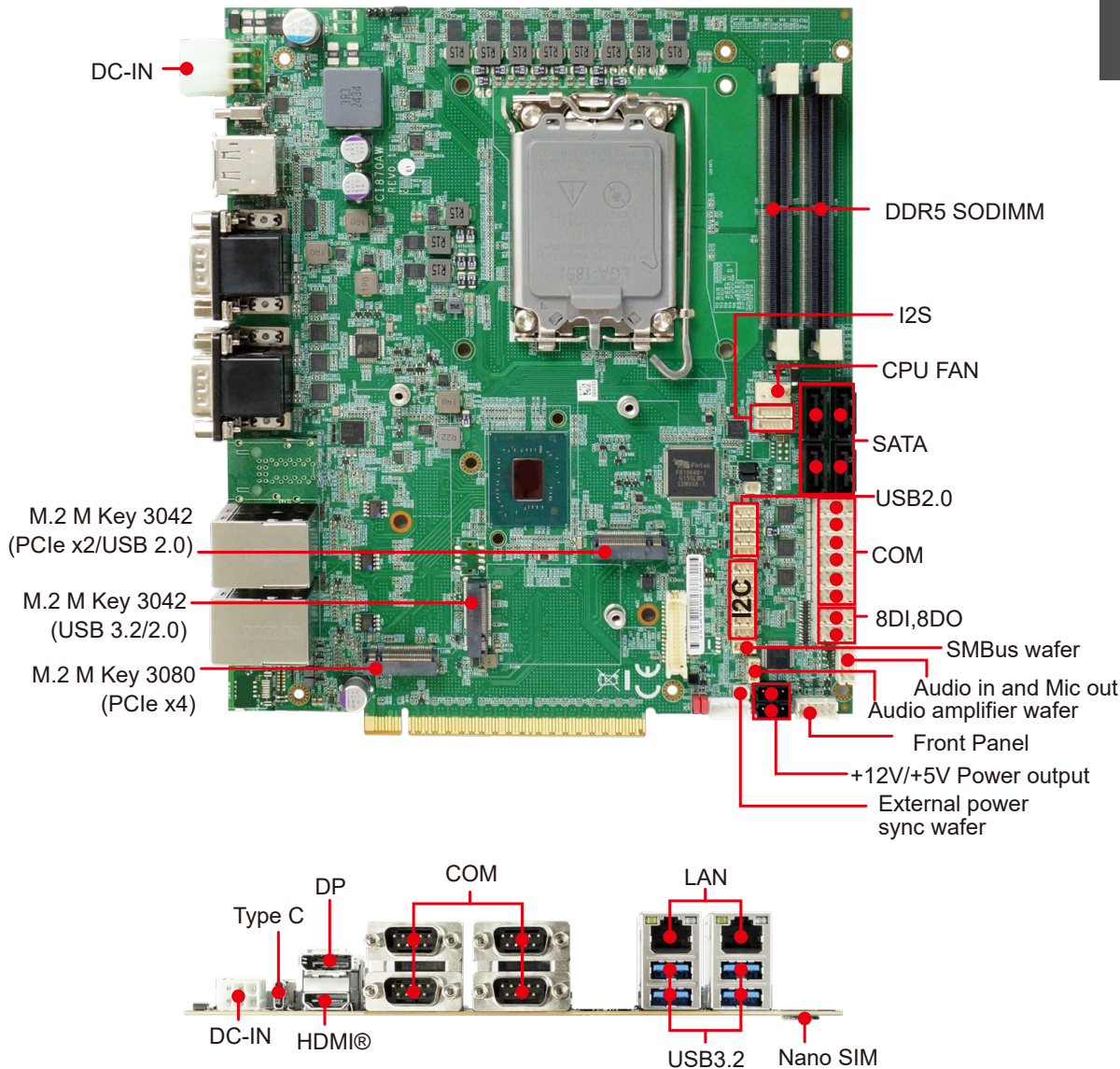
Function Map

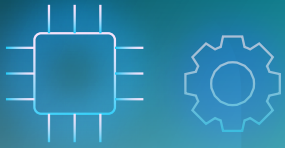


CI870AW

high performance solution for innovated embedded Applications

- Intel® Core™ Ultra Series 2 (Arrow Lake-S) processors, Q870 Chipset
- 2 x DDR5 SODIMM, Max 96GB
- Multiple Independent display:
 - 1 x HDMI®, 1 x DP, 1 x USB 3.2 Type C DP ALT
- 2 x Intel 2.5 GbE LAN, 4 x USB 3.2 Gen 1, 4 x USB 2.0
- 1 x M.2 M Key, 2 x M.2 B Key, 1 x Nano SIM, 1 x PCIe x16
- 4 x COM, 8DI / 8DO, HD Audio
- TPM 2.0, SMBus, I2C, I2S
- Wide Range DC-IN +12-36V





Unlocking Infinite Versatility: Flexible Expansion for Your Edge AI Solutions

Engineered for ultimate adaptability, the motherboard supports a wide range of modular expansion combinations via the CN073 / CN075 M.2 modules. Utilizing the SSL and USB Type-A connector, users can seamlessly connect to various expansion boards (via either PCIe or USB signals) to satisfy diverse application needs:



CN073



CN075

Multi-LAN Expansion:

Choose from 4 x GbE LAN (CL210A), 4 x PoE LAN (CL210P), or 4 x Fiber LAN (CL210F).

Advanced Wireless Connectivity:

Expand with the 4-Port M.2 B-Key (3042/3052) + 4-Port Micro SIM Slot module (CN063) for robust 4G/5G deployment.

Multimedia Integration:

Supports real-time video analytics via the HDMI® video capture card (ME225-S).

Tailor your system effortlessly to conquer demanding industrial environments and complex AI inferencing!

CN073



M.2 2242 B+M Key to PCIe/USB 3.0 Signal Adapter Board

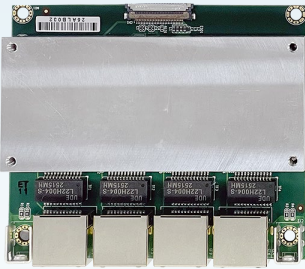
- Supports PCIe or USB signal via SSL connector with Micro Coaxial Cable
- Supports USB 3.0 signal via USB Type-A connector

CN075

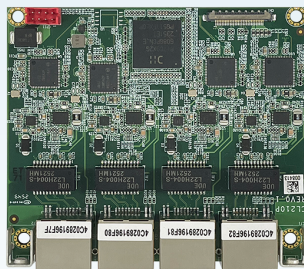


M.2 2280 B+M Key to PCIe Signal Adapter Board

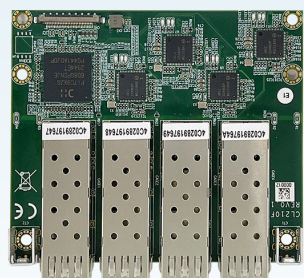
- Supports PCIe signal via SSL connector with Micro Coaxial Cable



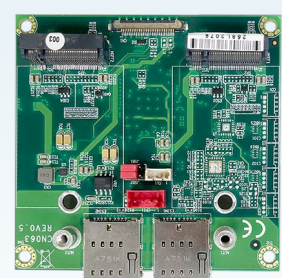
CL210A



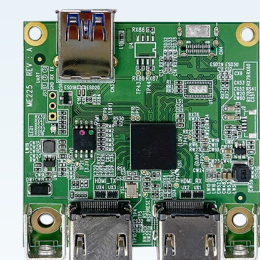
CL210P



CL210F



CN063



ME225A



Internal Power Supply

The 1U fanless CI870AW is an Intel® Core™ Ultra-powered edge AI rackmount server featuring flexible expansion, versatile storage, and support for both internal power supply and external adapter options.

1 U Fanless CI870AW

Dimension: 483.7W × 397.3D × 44.3H mm

Rugged heat-dissipating 1U rackmount system



The TWISTER(L) CI870AW is a rugged, fanless edge AI computer featuring high-performance Intel® Core™ Ultra processing, extensive connectivity, and flexible expansion tailored for harsh industrial environments.

Twister (L) CI870AW

Dimension: 300W × 262D × 85H mm

Rugged heat-dissipating Embedded system

About LEX Computech

Established in 1990, LEX Computech is an industrial computer manufacturer, provides LEX SYSTEM embedded solutions include designing and manufacturing of industrial motherboards, fanless embedded systems, rugged panel PC, in-vehicle fanless PC, network appliances, machine vision and automation controllers & IoT related solutions.

LEX SYSTEM's R&D team consisted with electronics, layout, system, mechanical, BIOS, firmware as well as software engineers, plus with experienced project management, in-house manufacturing and after sales service provides ODM /OEM customized products for various application-oriented projects.

Taiwan Headquarters LEX Computech Co. Ltd

Tel: 886 2 2228-1055
Fax: 886 2 2228-1056
Email:
lex.sales@lex.com.tw
www.lex.com.tw

European Subsidiary LEXCOM B.V.

Tel: 31 73 687-2390
Fax: 31 73 687-2398
Email:
info@lex.com.tw
www.lex.com.tw

CHINA Subsidiary

东莞市研毅通电子科技有限公司
Tel: 0769-81031869

www.yanyitong.com.cn